
VxComm Applications

- Overview
- Installing the VxComm Driver
- Adding a 7188E/8000E server and configuring the VxComm Driver
- Removing a 7188E/8000E server
- Uninstalling the VxComm Driver
- Diagnostics and Trouble Shooting
- FAQ

1 Overview

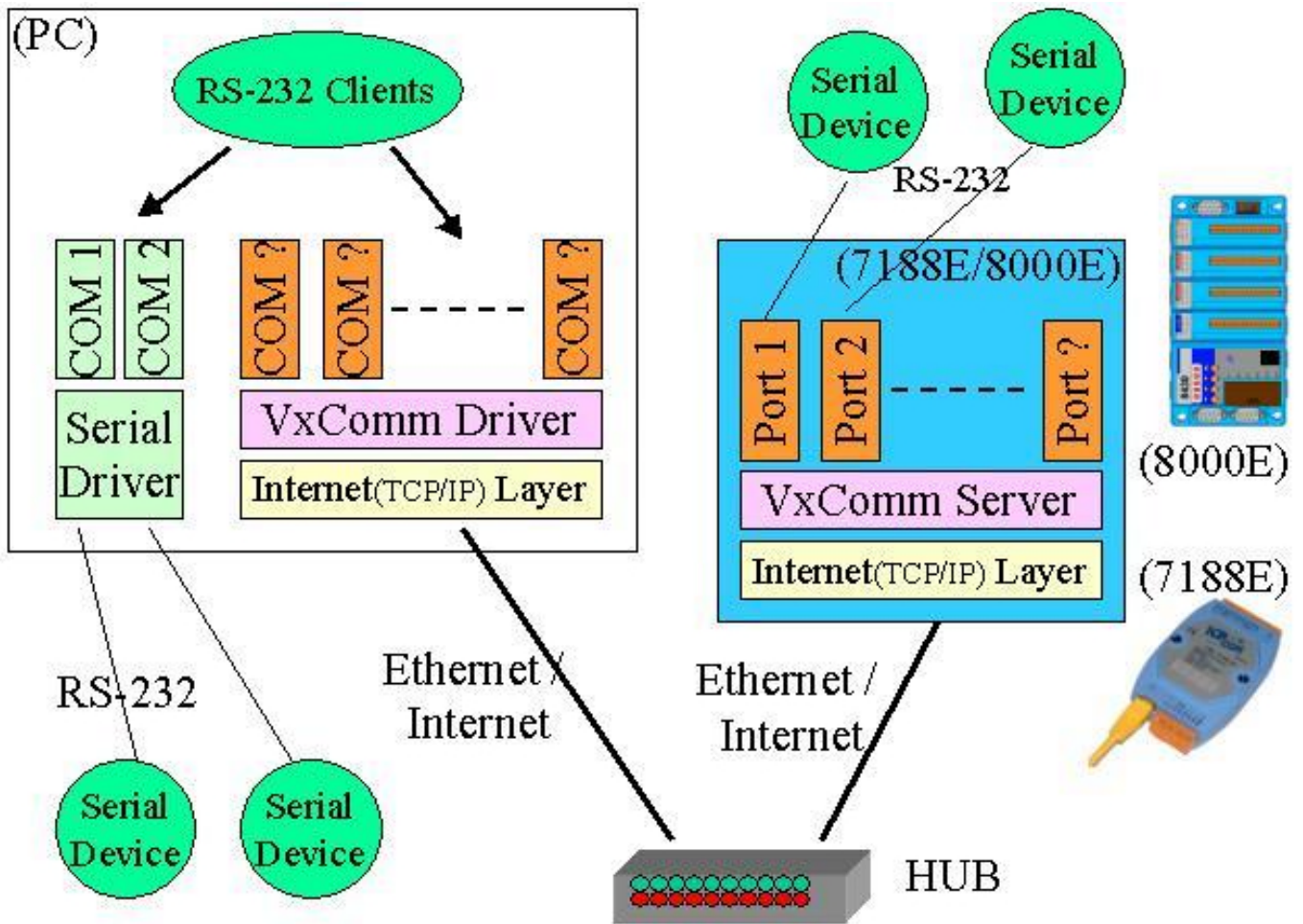
The [VxComm \(Virtual Comm\) Driver](#) and [VxComm Utility](#) are very easy to install and use. The first thing to do is to find the installation file in the included CD. The directory is:

- 7188e\VxComm\NT\VxCommNT.exe
(for Windows NT 4.0) or
- 7188e\VxComm\2K\VxComm2K.exe
(for Windows 2000, Windows XP).

This document shows how to install and configure the driver correctly. There are three parts to the quick start manual. The first part instructs users how to install the software. The second part shows how to add a [7188E/8000E](#) server and configure a COM port. Finally, the third part teaches you how to remove a [7188E/8000E](#) server.

1.1 Architecture

The **VxComm Driver** creates COM port(s) and maps them to the COM port(s) of the **7188E/8000E**. The user's RS-232 client programs need only to change to the different COM port to access the serial devices that are allocated to the Internet or Ethernet network via the **7188E/8000E**.



1.2 Ports mapping

Vxcomm Driver/Utility supports Port 1 to Port 8 in accessing COM1 to COM8 of the 7188E/8000E. Another Port I/O is designed to access the I/O boards mounted on 7188E or 8000E.

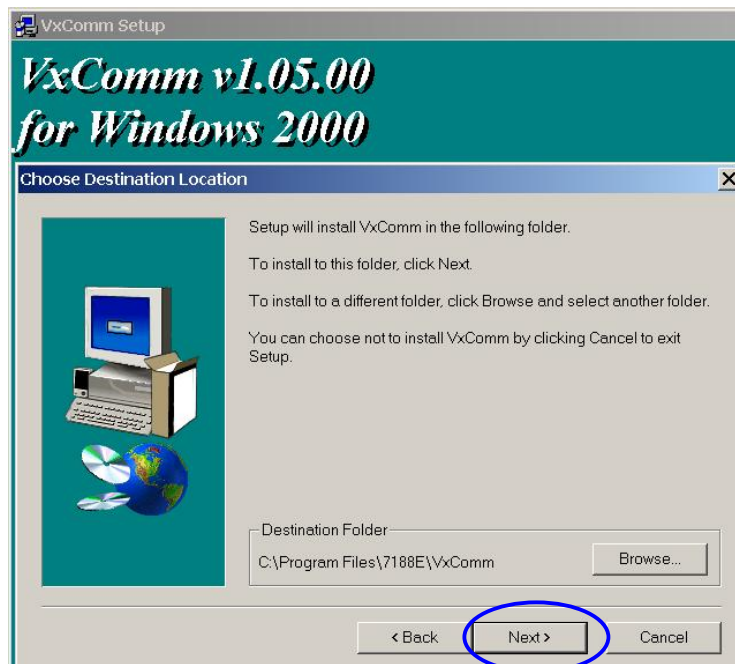
With the help of the [VxComm Driver/Utility](#), users can map remote COM port and I/O boards to become a virtual COM port of PC. One PC can control a maximum of 256 COM ports (including COM1 and COM2).

Local COM Port (PC)	VxComm Driver/Utility (PC)	Remote COM port (7188E/8000E)
COM ?	Port 1	COM1
COM ?	Port 2	COM2
COM ?	Port 3	COM3
COM ?	Port 4	COM4
COM ?	Port 5	COM5
COM ?	Port 6	COM6
COM ?	Port 7	COM7
COM ?	Port 8	COM8
COM ?	Port I/O	I/O board

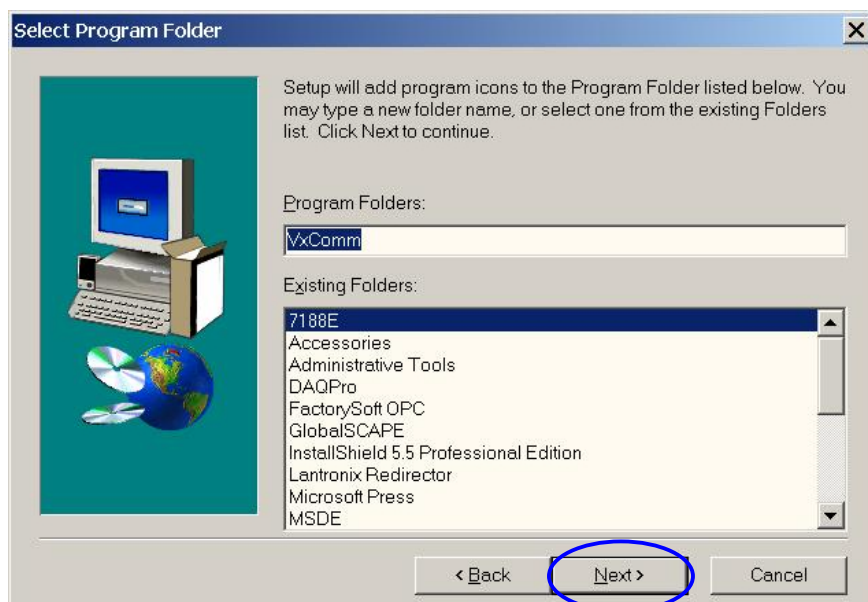
2 Installing the VxComm Driver

Step 1: Run [VxComm2K.exe](#) (for Windows 2000, Windows XP) or [VxCommNT.exe](#)(WindowsNT 4.0) in the packaged CD to start installing.

Step 2: Choose a destination folder.



Step 3: Choose a program folder.



Step 4: Select the "Yes, ..." option and click the "Finish" button to reboot your computer.



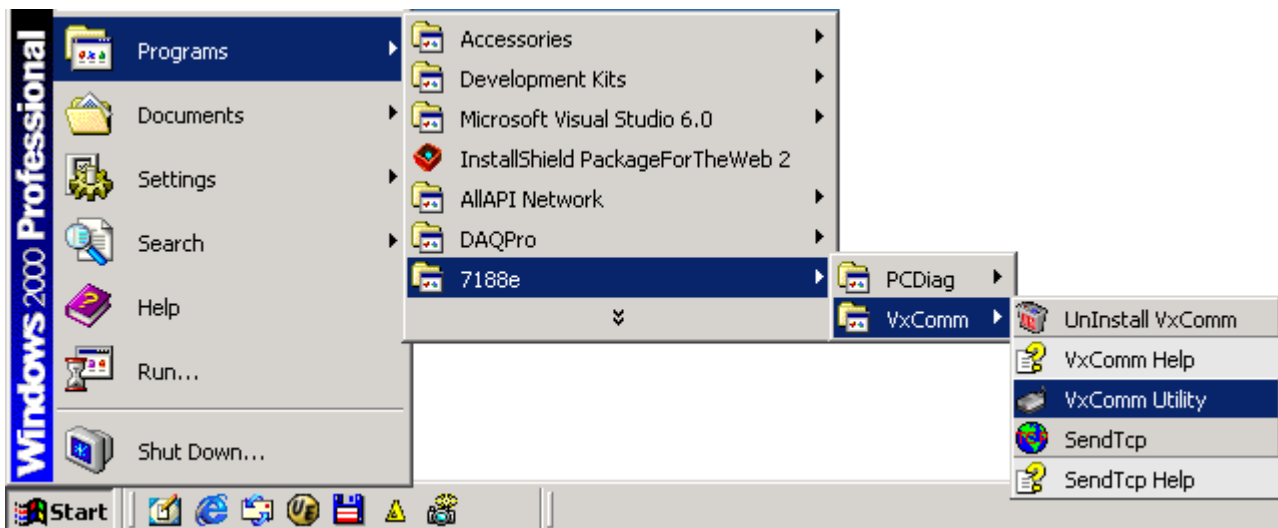
Step 5: After rebooting the computer, the **VxComm Utility** will ask you to configure the virtual COM port(s). Please refer to the next section for more information.

3 Adding a 7188E/8000E server and configuring the VxComm Driver

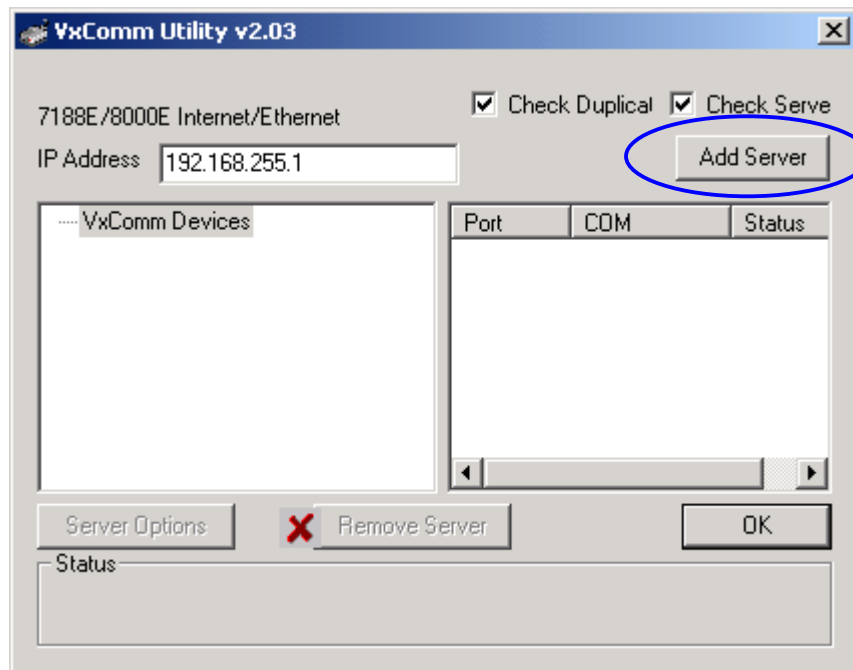
7188E/8000E's default IP address is 192.168.255.1.

Step1: Obtain the IP address of the 7188E/8000E. Either 7188x.exe, 7188xw.exe or Configure wizard can help you in obtaining the IP address of the 7188E/8000E. Refer to Sec. 3 of “7188E hardware user’s manual” for information regarding the use of these three tools.

Step 2: Select the "[VxComm Utility](#)".



Step 3: Add a 7188E/8000E server IP address and Press the "Add Server" Button.



Note:

"Check Duplicate" option:

Checks whether the IP address is already listed in the server window (left-hand window). Default is automatically checked. The following window pops up if IP address is duplicated.

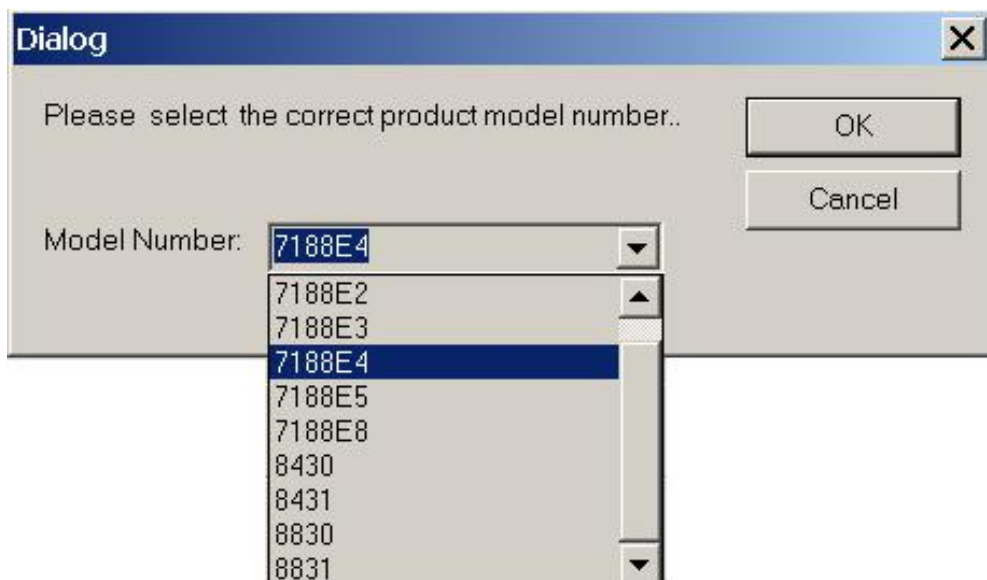


"Check Server" option:

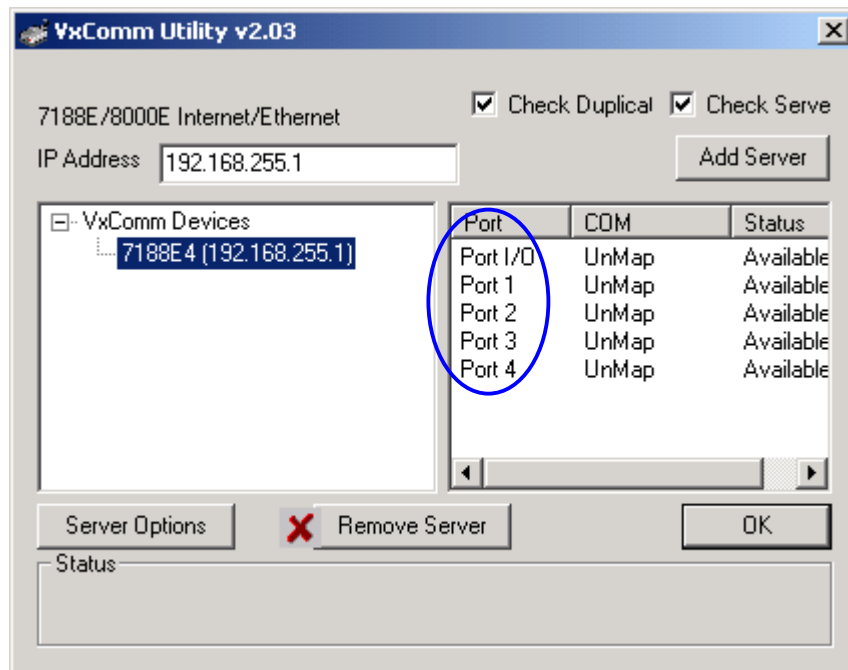
Connects to the **7188E/8000E** and gets the device's name before adding to the server window (left-hand window). Default is automatically checked. The following window pops up if the host fails to connect.



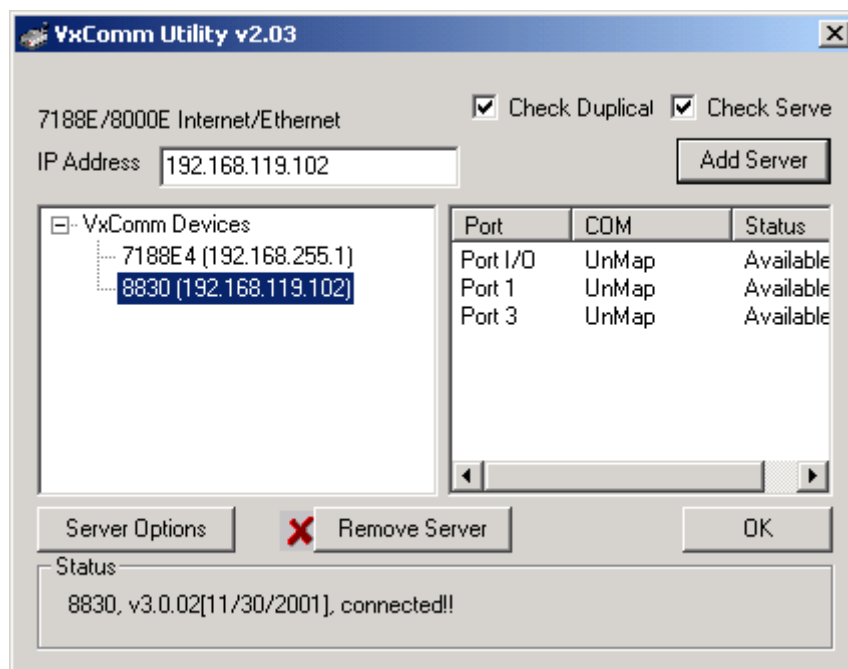
Step 4: The following window pops up if you uncheck the **"Check Server"** option before pressing the **"Add Server"** button. Please choose a suitable **"Model Number"** of **7188E/8000E** and then click the **"OK"** button.



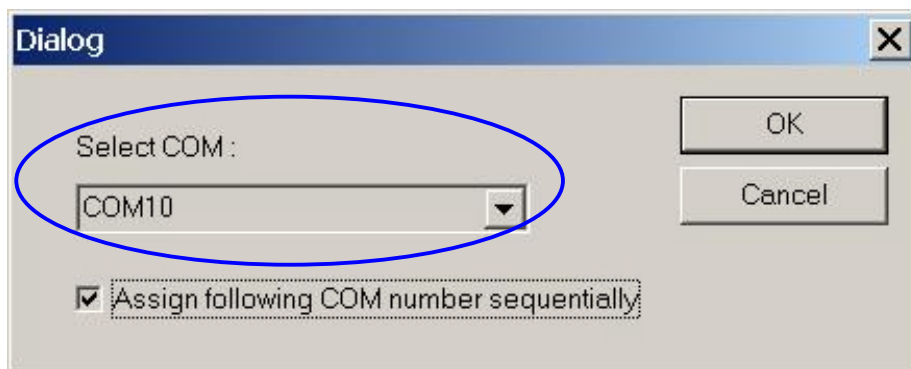
Step 5: Select one of the 7188E/8000E devices and configure the virtual COM port(s) by double clicking "Port1", "Port2" or etc..



Another example when adding the 8830 at IP address 192.168.119.102.



Step 6: Select an appropriate COM port number, and then click the "OK" button.

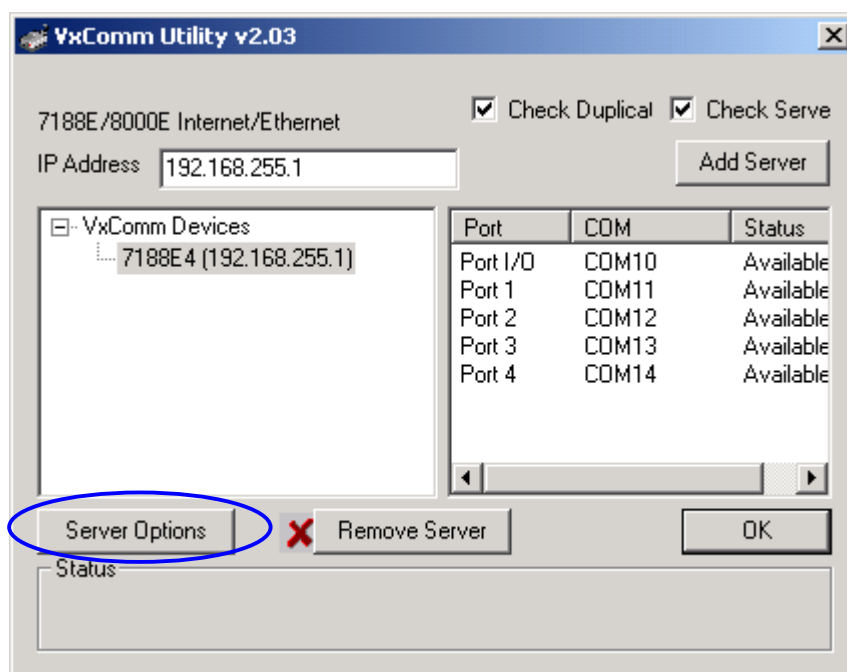


Note:

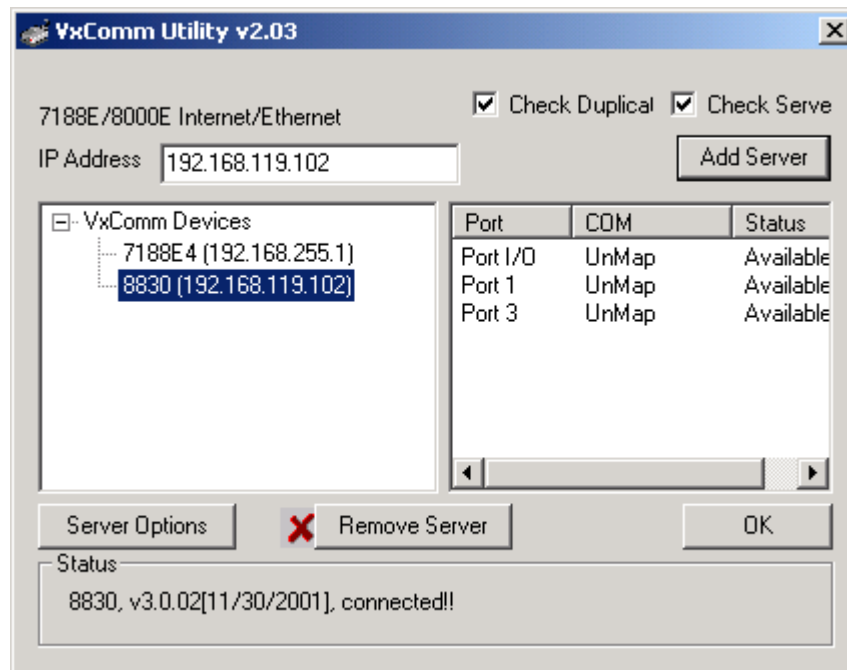
"Assign following COM number sequentially" option :

Assigns the following ports with the available COM port number sequentially and automatically.

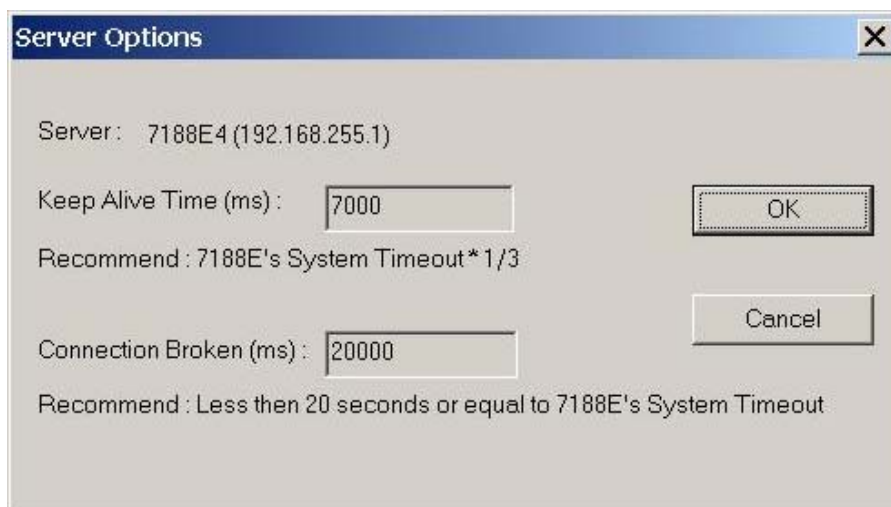
Step 7: Select one of the 7188E/8000E devices and then click the "Server Options" button to configure the options.



Another example of virtualizing 8830's COM1 to become PC's COM20.



Step 8: Key in the value and then click the "OK" button to exit.



Note 1: **Keep Alive Time (ms) field:**

After connecting to the 7188E/8000E, the VxComm Driver will automatically and periodically sends commands to keep the 7188E/8000E alive. The timer will be reset after each sending command or receiving data success. The Keep-Alive mechanism won't work until the next timeout.

The default setting of Keep-Alive time is about 7000 ms. It's recommended setting is (7188E/8000E's [System Timeout](#) * 1 / 3) or a smaller value.

Connection-Broken (ms) field:

The [VxComm Driver](#) will try to build a new connection when the connection is broken.

When clients send a message to the 7188E/8000E, the Internet (TCP/IP) layer may respond with a "[Disconnect](#)" event to the [VxComm Driver](#) if it sends the message failure in 20 seconds or later. Users can set a shorter [Connection-Broken](#) timeout [for example: 10000 ms (10 seconds)] to force the [VxComm Driver](#) to build the connection again and get a quicker response.

If there is no sending/receiving signal in the connection during the [Connection-Broken](#) time, the connection will be marked as broken. The [VxComm Driver](#) will build the connection again in [Connection-Broken](#) time. Thus, the [Keep-Alive Time](#) should be shorter than the [Connection-Broken](#) time to make the connection come on-line.

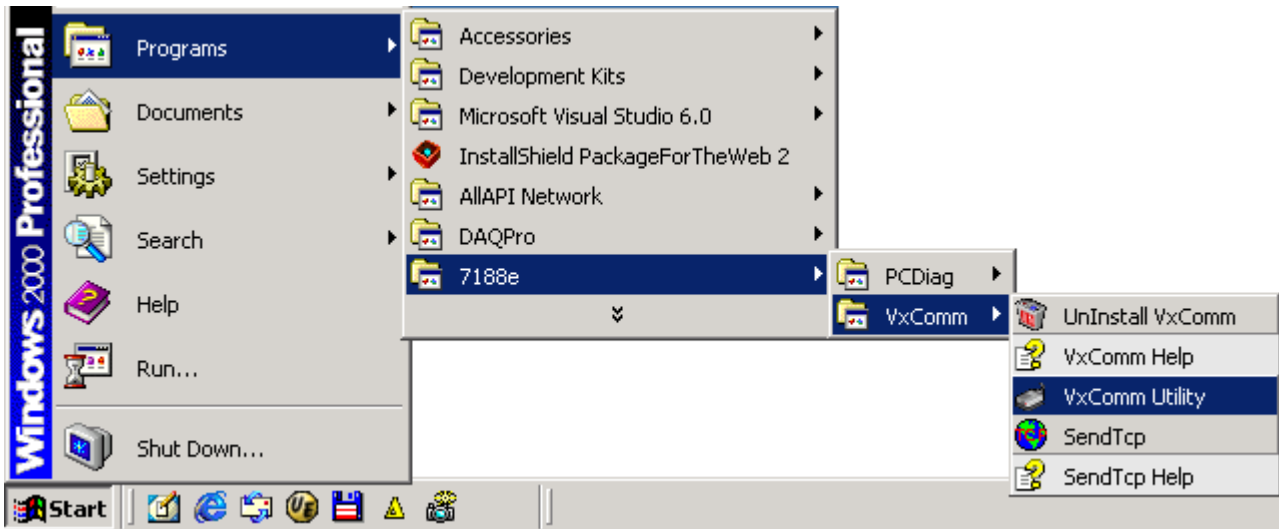
The default [System Timeout](#) (/STxxx) value of the 7188E/8000E is about 300 seconds. After client programs connect to the 7188E/8000E, the clients must send commands to keep the 7188E/8000E alive before timeout is up, otherwise the 7188E/8000E will reset itself and clients must build the connection again.

You can disable the [Keep-Alive Time](#) and the [Connection-Broken](#) mechanisms by setting their value to 0.

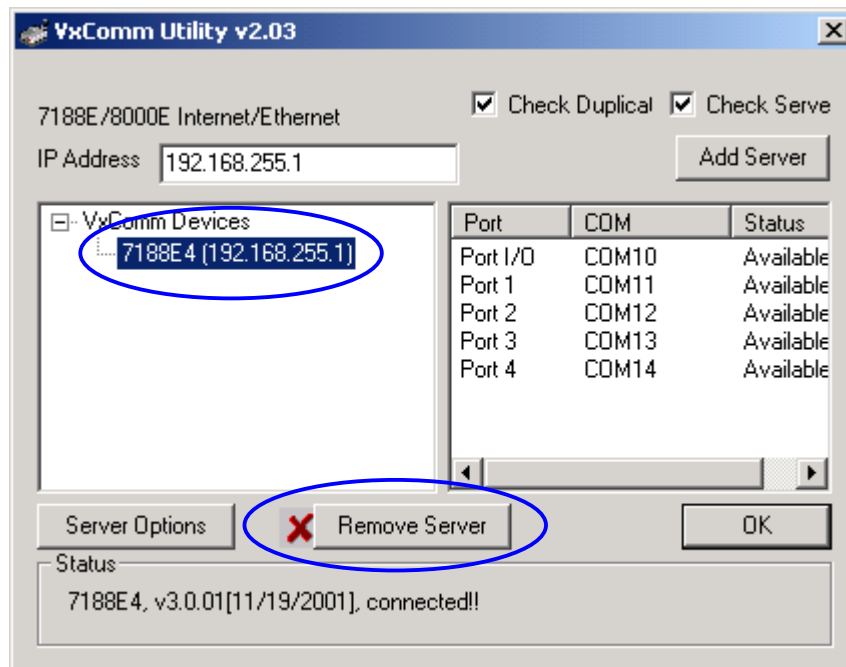
Step 10: Press the "[OK](#)" button to save the settings and exit the [VxComm Utility](#).

4 Removing a 7188E/8000E server

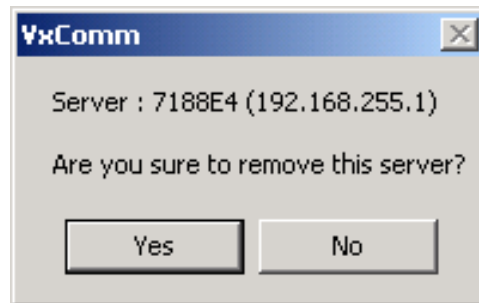
Step 1: Select the "VxComm Utility".



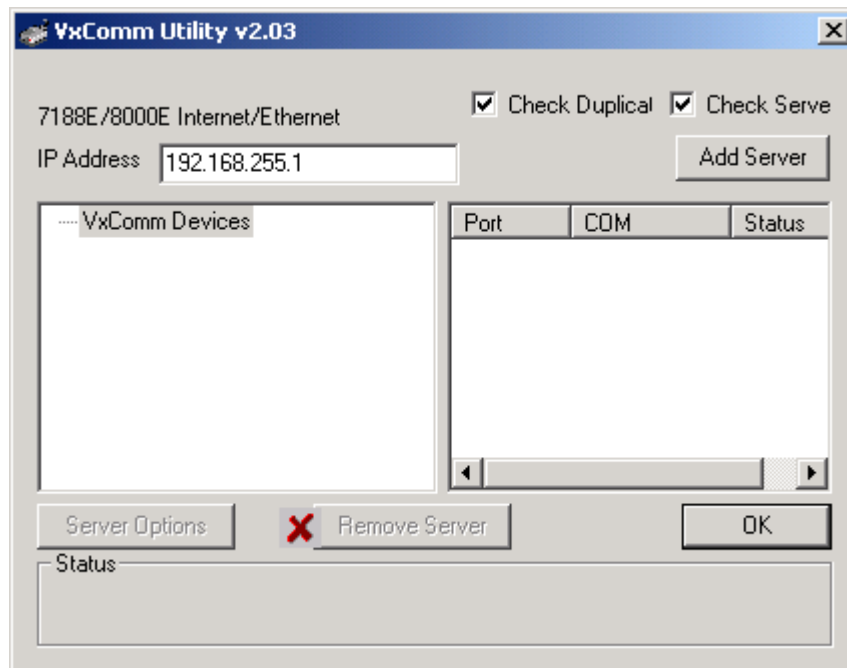
Step 2: Click the server name you want to remove and press the "Remove Server" button.



Step 3: The following window will pop up, please make sure of your choice and press the "Yes" button to remove it.

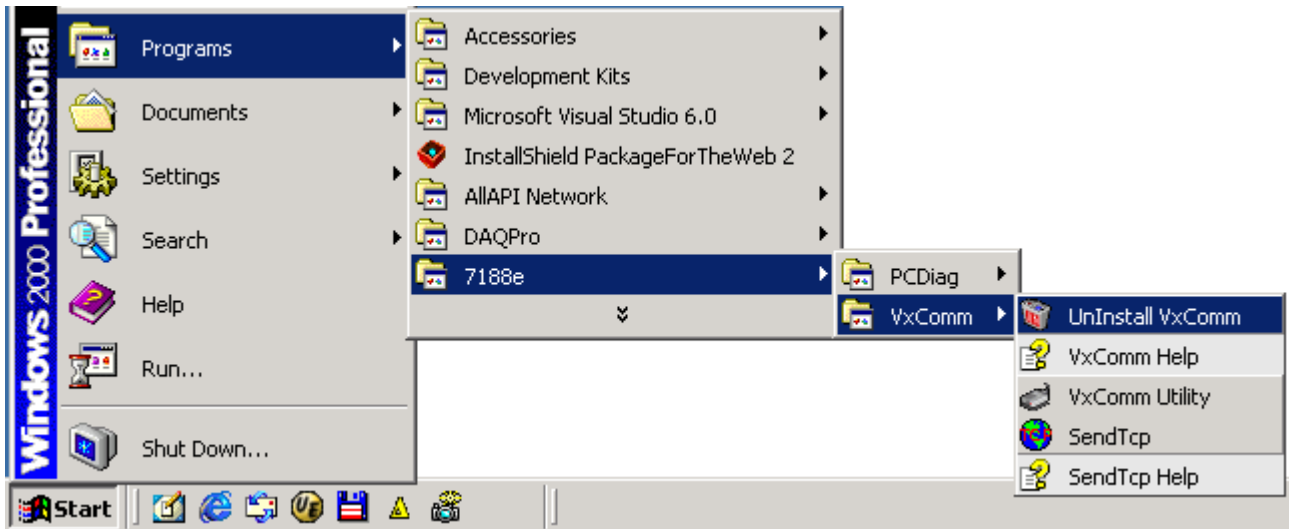


Step 4: Press the "OK" button to finish this utility.

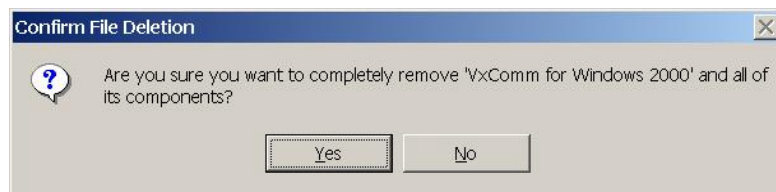


5 Uninstalling the VxComm Driver

Step 1: Select the "UnInstall VxComm".



Step 2: Click the "Yes" button.



Step 3: Click the "OK" button.

