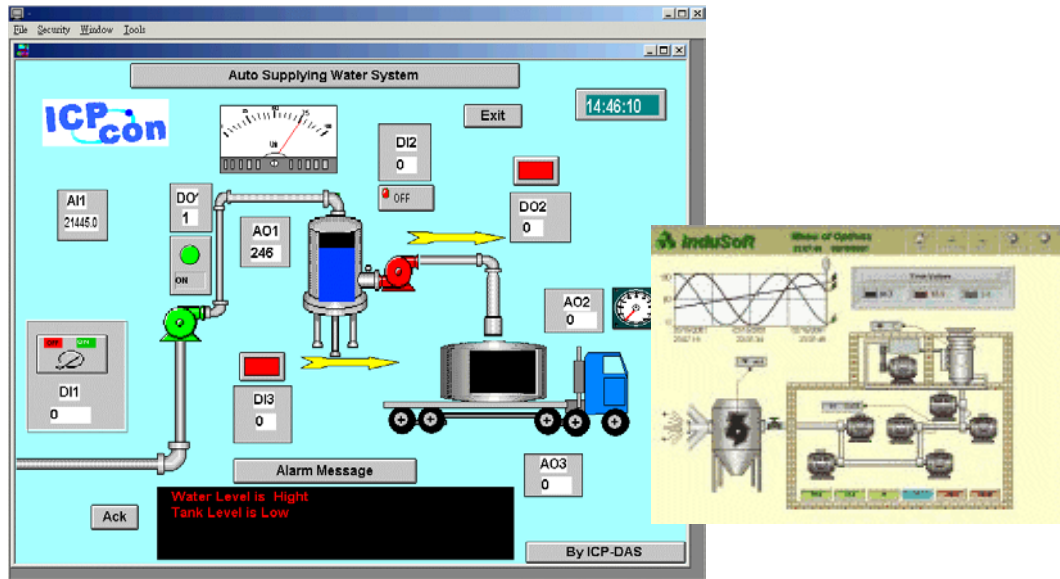
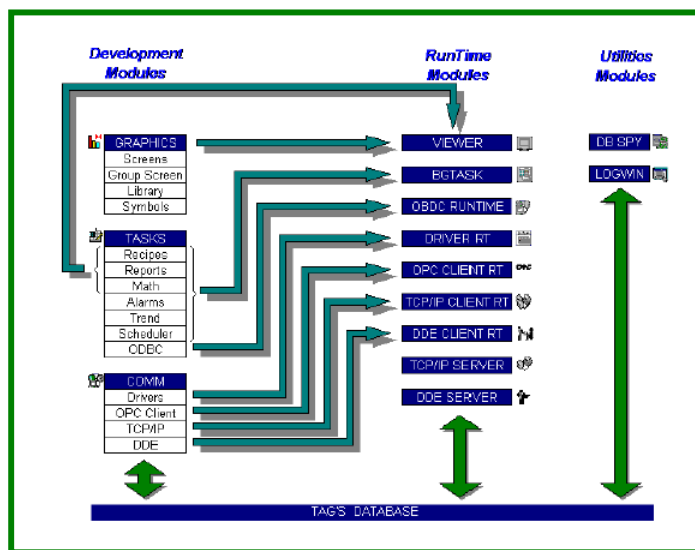


# SCADA Solution-InduSoft Web Studio



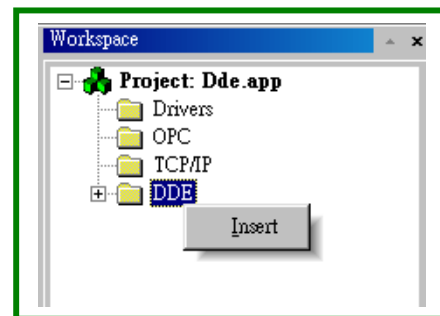
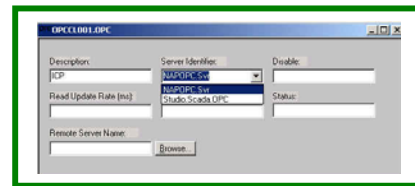
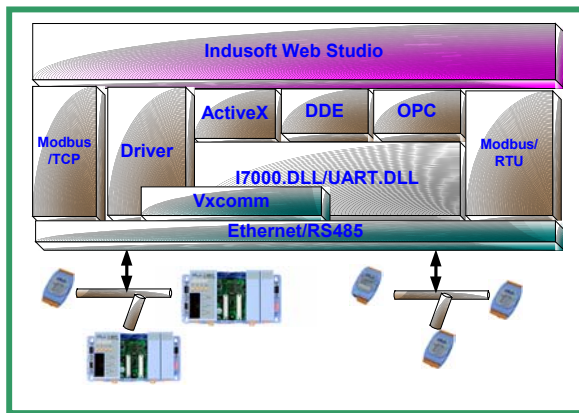
## ➤ Introduction

InduSoft Web Studio is a powerful, integrated collection of automation tools that includes all the building blocks needed to develop human machine interfaces (HMIs), supervisory control and data acquisition (SCADA) systems, and embedded instrumentation and control applications. Web Studio runs in native Windows NT, 2000, XP and CE 3.X/4.X(x86) environments and conforms to industry standards such as Microsoft.NET, OPC, DDE, ODBC, XML, SOAP and ActiveX. We provide the InduSoft bundled driver to integrate InduSoft software and ICP DAS products (I-7000 and I-8000) for SCADA system. There are also OPC, DDE and ActiveX development toolkit provided to cooperate with InduSoft. Besides, VxComm software of ICP DAS can be performed to link to Internet/Intranet modules in a easy way. And 7000 Utility of ICP DAS can be used to configure network module for easy use and maintenance.



## ➤ Specifications

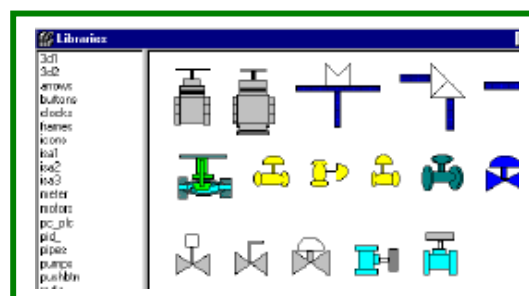
- Windows NT/2000/XP operating system for development
- Windows NT/2000/XP or Windows CEV3.X and Windows CE.NET(x86) operating system for runtime
- OPC Client and OPC Server modules with integrated OPC Browser
- DDE Client and DDE Server modules
- TCP/IP Client and TCP/IP Server modules to exchange tag values and configure redundancy systems
- More than 150 communication drivers for different devices (such as PLC) from several manufacturers; such as Allen-Bradley, Siemens, GE-Fanuc, as well as standard protocols such as MODBUS RTU/ASCII, DeviceNet, Profibus, Interbus, and so forth.



## ➤ InduSoft Web Studio Feature

### Graphics

- Create sophisticated interfaces with point and click, drag and drop ease
- Import graphics from more than 15 different formats for enhanced and realistic screens
- Support more than 40 pre-defined dynamic effects; including shadowing, foreground and background color, blinking, fill, rotation, motion, scale, text, and animation
- Provide an object-oriented environment for simple application development and screen and object re-usability
- Use an extensive symbol library to simplify development

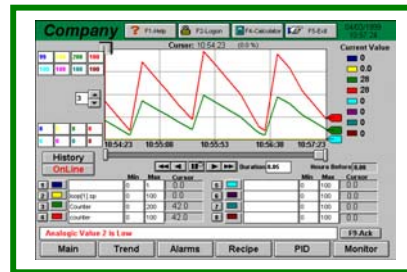


## Alarms

- Sophisticated alarms management system allows you to send alarms to various utilities such as screen, e-mail, Web browser, and archive
- Provide free format alarm messages, uses secondary search keys, and accesses through groups or tags
- Archive alarms to a file, printer, or to an SQL-database
- Filters, sorts, or color sorts alarms for easier visual interpretation

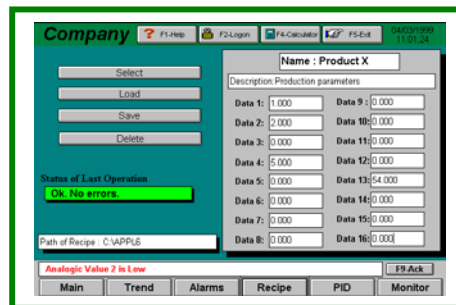
## Trending

- Keep track of process behavior on-line or through historical trending
- Distribute information throughout the network for easy monitoring on screens or a Web browser



## Recipes and Reports

- Create flexible, user-defined recipe groups
- Provide user-configurable reports, including text and graphics, that can be displayed in an application or on the Web



The screenshot shows a software interface for recipe management. The title bar reads 'Company'. The main area is titled 'Name: Product X' and contains a 'Description: Production parameters' section. Below this, there are 16 data fields labeled 'Data 1' through 'Data 16', each with a numerical value (e.g., 1.000, 2.000, 0.000, etc.). On the left side, there are buttons for 'Select', 'Load', 'Save', and 'Delete'. Below these buttons, there is a 'Status of Last Operation' section with a green bar indicating 'OK. No errors'. At the bottom, there is a 'Path of Recipe: C:\APPL5' field and a 'FR Ack' button. Navigation buttons for 'Main', 'Trend', 'Alarms', 'Recipe', 'PID', and 'Monitor' are visible at the bottom.

## Input/Output

- Include more than 140 device drivers
- Support OPC (Client & Server)
- Support various PC Control packages

## General

- Advanced math library has more than 100 standard functions
- Programming is via flexible and easy-to-use scripting language
- Provide multi-level security for applications, including the Internet and Intranet
- Conform to industry standards such as Microsoft DNA, OPC, DDE, ODBC, XML, SOAP, and ActiveX
- Provide automatic language translation at run-time
- Allow internationalization using Unicode

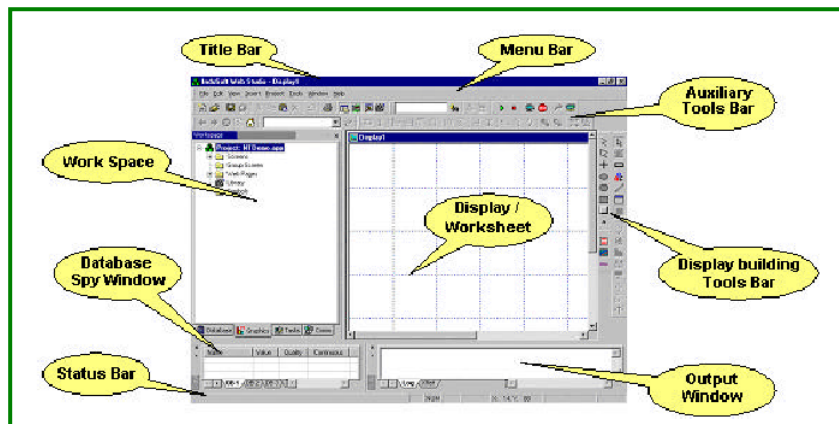
## Features – Product Architecture

- Common development environment for Windows XP/2000/NT and CE 3.X/4.X(x86) run-time platforms
- Remote management and deployment
- On-line configuration
- Object-oriented database
- Object-oriented graphical interface and Object browser
- Microsoft Windows XP look and feel
- Explorer-style project and document management
- Microsoft Windows DNA and .NET compliant

- Based on MFC (Microsoft Foundation Classes) libraries
- Open architecture (API Toolkits) for easy integration

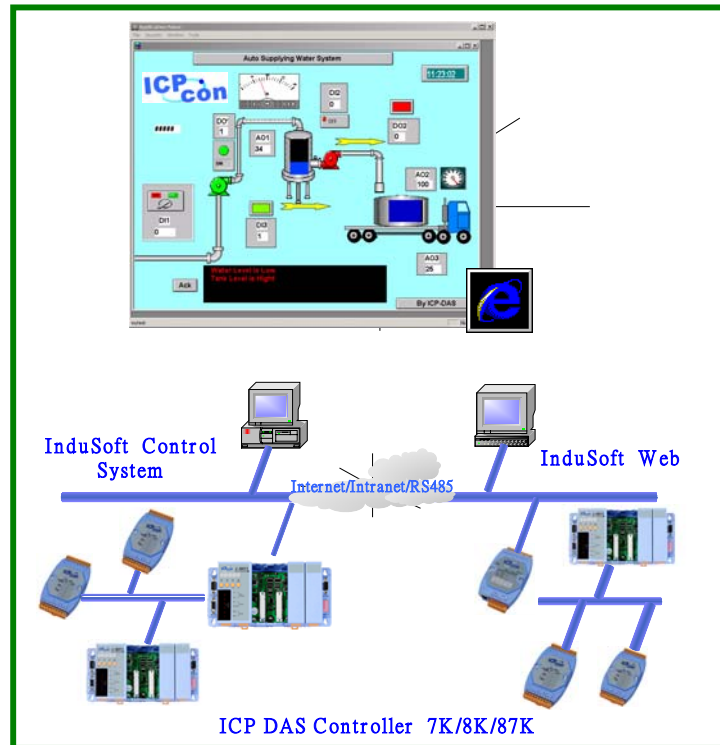
## Features – Application

- FULL-FEATURED Web Thin Client solution (visualization and commands, security system, On-line/History alarms, On-line/History trend, ActiveX support, translation, etc.)
- FULL-FEATURED WinCE-based run-time environment (CEView)
- Automatic e-mail support (SMTP)
- Dial-up connection interface
- Scalable security system (unlimited groups and users)
- Fill-effects (gradient color)
- Run-time translation tool
- Communication drivers: Over 150 drivers for WinNT/2K/XP and WinCE 3.X/4.X(x86)
- OPC Client and Server
- TCP/IP Client and Server
- DDE Client and Server
- ODBC Interface
- ActiveX container (WinNT/2K/XP and WinCE 3.X/4.X(x86))
- Dynamic library of symbols –customizable
- Intuitive script language (does not require programming skills)
- Alarms and trends archiving
- On-line visualization of alarms and trends
- Recipes (XML and simple text)
- Reports (RTF and simple text)
- Scheduler module (events)
- PC-based control software integration through a shared database
- Debug tools: Database Spy and LogWin (local or remote maintenance on the run-time system)



## ➤ Applications

- Factory & Machine Automation
- Environment & Facility Monitoring
- Industrial Control/Automation
- Building Automation
- Remote Data Acquisition



➤ **Ordering Information**

| DEVELOPMENT LICENSE WITH ONE RUN-TIME AND ONE WEB SESSION: |  |
|--|--|
| Model  | Description  |
| InduSoft-NT512000D   | Advance Server (512,000 Tags, unlimited drivers)                                     |
| InduSoft-NT64000D  | Control Room (64,000 Tags, 8 drivers)  |
| InduSoft-NT4000D   | Operator Workstation (4000Tags, 5 drivers)   |
| InduSoft-NT1500D   | Local Interface for Windows NT/2000/XP (1500 Tags, 3 drivers)                        |
| InduSoft-CE1500D   | Local Interface for Windows CE (CE View)(1500 Tags, 3 drivers)                       |
| InduSoft-gateway   | InduSoft Gateway   |
| ADDITIONAL RUN-TIME LICENSES:                              |  |
| InduSoft-NT512000R   | Advance Server (512,000 Tags, unlimited drivers)                                     |
| InduSoft-NT64000R  | Control Room (64,000 Tags, 8 drivers)  |
| InduSoft-NT4000R   | Operator Workstation Run-time (4000 Tags, 5 drivers)                                 |
| InduSoft-NT1500R   | Local Interface for Windows NT/2000/XP Run-time License (1500 Tags, 3 drivers)       |
| InduSoft-CE1500R   | Local Interface for Windows CE 3.X/4.X(x86) Run-time (CEView) (1500 Tags, 3 drivers) |
| InduSoft-NT150R  | Lite for Windows NT/2000/XP Run-time License only (150 Tags, 3 drivers)              |
| InduSoft-CE150R  | Lite for Windows CE 3.X/4.X(x86) Run-time only (150Tags)                             |